



DENTAL TRAUMA GUIDE

- evidence based treatment guide -

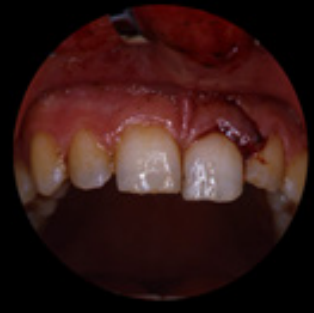


DISCOVER WHAT
WE CAN DO
FOR YOU AND
YOUR PATIENTS



Rigshospitalet

dentaltraumaguide.org



TYPICAL WEEK IN THE EMERGENCY ROOM

... EACH INJURY REQUIRES
DIFFERENT SPECIFIC TREATMENT

DENTAL TRAUMA A MULTIDISCIPLINARY APPROACH

- Oral and dental trauma are complex fields in Dentistry
- Oral trauma can damage or destroy tissues such as enamel, dentine, cementum, pulp, periodontal ligament, bone, and soft tissues
- Each of these types of tissues requires its own treatment and has its own specific prognosis

RAISE THE LEVEL OF CARE FOR DENTAL TRAUMA PATIENTS

EVIDENCE BASED

The **Dental Trauma Guide** is the world leading webtool based on evidence of more than 4000 cases, treated and followed up over a long time. Diagnose, treat, and check the prognosis of different scenarios of dental traumatology with just few clicks. The **Dental Trauma Guide** is rooted in the University Hospital of Copenhagen, Rigshospitalet, and is a research based non-profit organization, recognized as the legacy of the father of dental traumatology Dr. Jens Ove Andreasen.



DIAGNOSIS



TREATMENT

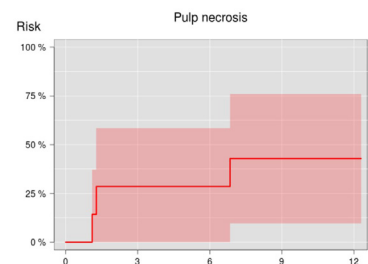


PROGNOSIS

Is there tooth displacement?



No displacement



With the *Trauma Pathfinder* quickly identify an injury answering simple Yes or No questions.

The website provides accessible step by step animations.

Identify healing/non healing predictors for the various trauma entities

BECOME A MEMBER



DENTAL TRAUMA GUIDE
- evidence based treatment guide -



**LOW
COST**

**SIGN UP
NOW!**

33 USD
per year/ billed annually

***"GOOD TREATMENT IS
ESSENTIAL TO MINIMIZE
COMPLICATIONS AND
AVOID EARLY LOSS OF
THE TRAUMATIZED TOOTH."***

Use **Dental Trauma Guide** to increase the
tooth survival chance for your patients.

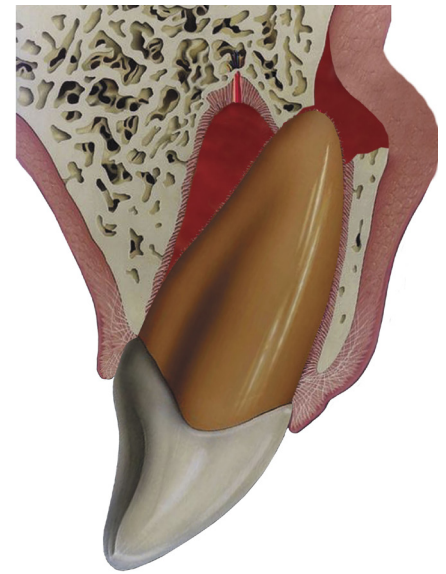
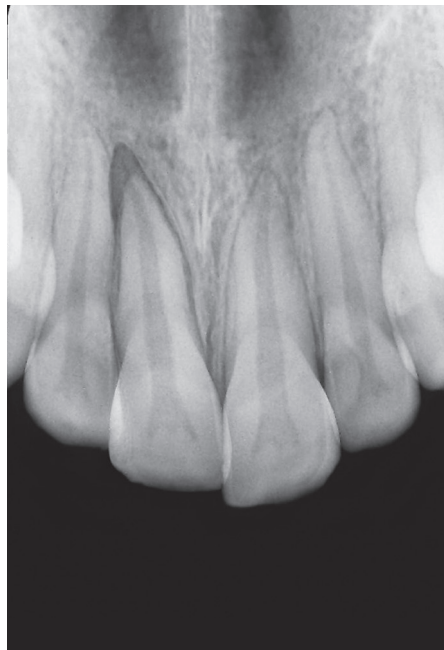
IT IS NOT ONLY ABOUT TEETH

... THE PSYCHOLOGICAL ASPECT IS IMPORTANT TOO

One billion living people today have been exposed to dental trauma. Unfortunately, many patients receive incorrect treatment which increases the risk of later complications and tooth loss. Proper treatment is essential for the best prognosis of the traumatized tooth.

When a child or an adult is affected by a dental trauma, there is a considerable negative psychological impact that can last for many years.



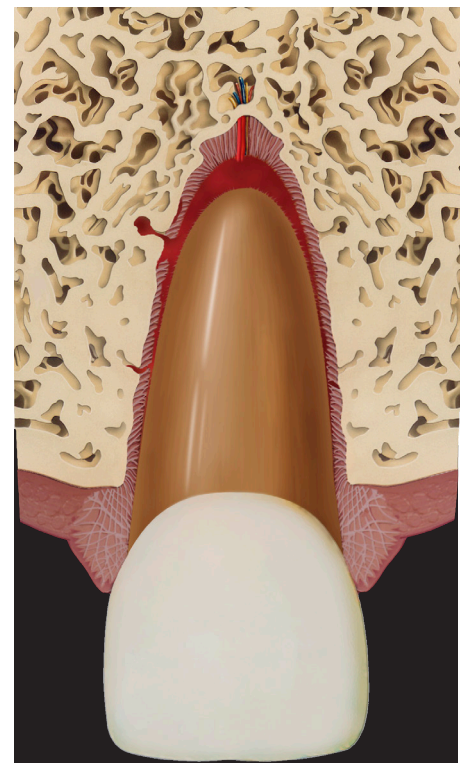


TREATMENT PLANNING

Dental trauma can be divided into 8 fractures and 6 luxation entities. Combination injuries in which both luxation and fracture have occurred are unfortunately frequent, causing 48 combinations which must be seen as 48 distinct healing scenarios. The complexity is further increased by the fact that trauma to the primary and the permanent teeth must be treated as separate entities. This results in up to 96 possible scenarios and trauma events!

The Dental Trauma Guide has been designed to guide you in correctly identifying the injury to sustain a long term treatment plan for your patient.

The Dental Trauma Guide contains detailed injury's etiology illustrations, photographs, X-Rays and step by step animated guidelines for treatments. Take advantage of the prognosis tool to give proper advice about a future long-term efficient treatment.



- *Illustrations*
- *X rays*
- *Eden-Baysal Index*
- *Animated Etiology*
- *Trauma Pathfinder*
- *Animated Guidelines*
- *Prognosis Predictor*
- *Statistics*
- *References*



DENTAL TRAUMA GUIDE USERS

THE IDEAL TOOL FOR EDUCATION

The **Dental Trauma Guide** is used in more than 20 countries, public service and private practice dentists as well as recognised medical and education centers, such as the **NHS, NYU, Kings College, the University of Bristol, Universitat Internacional de Catalunya, Université Catholique de Louvain** among others.

TRY IT
FREE



*Get **15 DAYS ACCESS**
write to
info@dentaltraumaguide.org

(Limited to Group Memberships for Education Institutions and Professional Associations. Conditions Apply)



YOUR WEB TOOL TO IMPROVED TREATMENT OF YOUR PATIENT'S DENTAL TRAUMAS



INDIVIDUAL
US \$33
per year/ billed annually

SIGN UP NOW!

GROUP* (+10)

Write to us for more information
about prices.

info@dentaltraumaguide.org

*Prices for group membership can vary according to number of users, organization size and country.